

emtech

enable.

empower.

evolve.

e

**celebrating 30 years  
of technological  
excellence**

A photograph of a modern building facade. The building features a curved, dark grey tiled exterior. A prominent red horizontal band runs across the upper portion of the curved section. Below this, the word "emitech" is displayed in large, white, three-dimensional, lowercase letters. The building's design includes angular, cantilevered sections. The sky in the background is overcast with grey clouds.

emitech

# Welcome to our **Company**

We are passionate about delivering our commitments and doing what's right for our customers. Our most fundamental core value is that we do what we say. When you engage Emtech you benefit from the collective experience and expertise of our entire organization.








## Vision

To be a global leader in innovative technology solutions.

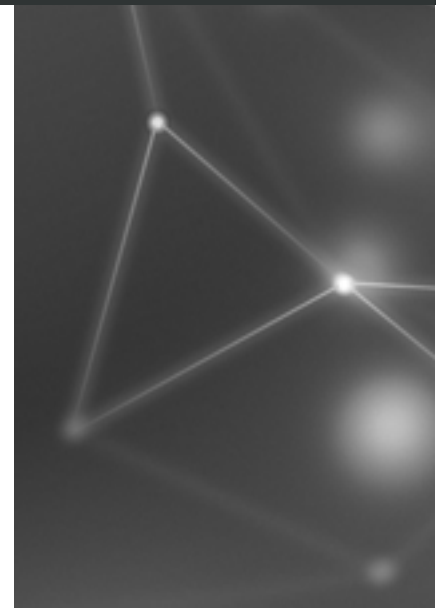
## Mission

Enabling technologies for businesses.

## Values

-  Integrity
-  Care
-  Innovative
-  Committed
-  Together

Our Commitment to Customers is what makes us unique. We have consciously set out to build a reputable organization and a desirable place to work. We strive to have a positive impact on our clients and on our communities through our collective efforts and innovative use of technology services. We work towards this objective every day.



Center of  
**Excellence**

UAE | KSA | Bahrain | India | USA | UK

**WEBA**  
IMMERSIVE LEARNING

**AL ZAH**

**emtech**

**ISPG**

 **ایمیرپرو**  
**EMERPRO**  
IT SOLUTIONS

# Transform Your Digital Enterprise

## Our Solutions



### Digital Solutions

We develop powerful innovative web applications for your business need.



### Cloud Integration

Design, deploy and constantly optimize your cloud infrastructure for better ROI.



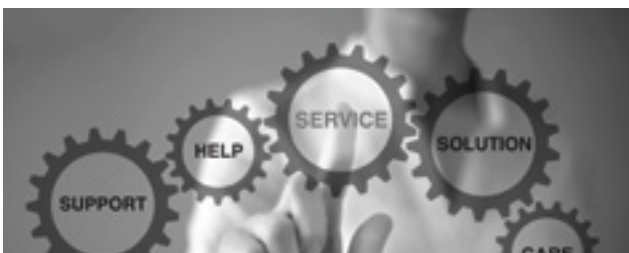
### Cyber Security

Strengthen your organization's cyber defense using our managed SOC service.



### Infrastructure Solutions

Build a strong backbone infrastructure to power your next-generation digital services.



### Managed Services

Power your business with our managed IT services from infrastructure to application.



### Application Development

Application Development (formerly DevOps) enables organizations to accelerate innovation without risking the business

## Digital Commerce Ecosystem

Make your business future-ready on a highly scalable Enterprise E-commerce Platform. oOrjit is a highly flexible & customizable customer-merchant engagement platform adaptable to any business model.

## Real-estate Marketplace Solutions

Comprehensive Real estate Eco-System which helps you to stay ahead in the market. A highly customizable feature-packed platform that builds powerful real estate websites for all business sizes.

## Automotive Digital Ecosystem

An innovative digital ecosystem for automotive. Digital showroom, Parts digitalization, Dealership Management, 360 Customer interaction platform, aftermarket and services.

## Learning Solutions

Adapt digital learning to empower your employees. We pride ourselves on providing the most innovative learning technology solutions and eLearning content development services that enable organizations to digitize learning.

## Digital Collaboration Solutions

The modern experience in Microsoft SharePoint is designed to be compelling, flexible, and more performant. Emtech specializes in helping you develop and implement modern SharePoint experience and digital workforce collaboration.

## **Azure Design & Deployment Services**

Consult, Design, Implement and Optimize cloud solutions for enterprises. Working closely with Microsoft we help organizations in seamless cloud adaption and seamless migration services.

## **Configuration & Operations Management**

Efficiently govern cloud operations with improved productivity and assured repeatability through a rule-based orchestration and seamless experience. Integrated enterprise workflows for efficient cloud operations.

## **Optimize & Manage Cloud Spend**

Assess maturity and efficiency to manage cloud costs with financial accountability, budgets, and forecasts through a unified and seamless experience. Automatic recommendations for cost optimization opportunities.

## **Security & Compliance**

Proactively govern security operations autonomously. Streamline operations with real-time, unified visibility into security threats, attacks, and vulnerability data, and enable remediation for assured security.

## **Continuous Governance**

Actualize cloud governance best practices for cloud operations, security, compliance, access, and resource by implementing a well-architected framework. Achieve integrated and continuous governance across cost, security and operations.



### **EDR, MDR & XDR Solutions**

Central to every security strategy is a detection and response capability which catches threats that have circumvented traditional security measures. EDR, MDR, and XDR are the three main detection and response solutions.

### **Network Security & WAF Solutions**

Architects to protect your network from the latest threats while accelerating your important SaaS, SD-WAN, and cloud application traffic. Consulting, designing, implementation and supporting enterprise network security and WAF solutions.

### **SIEM & SOC Solutions**

Multi-tenant cloud architecture fueled with integrated threat intelligence, a built-in app store with purpose-built threat detection apps. Proactively monitor your endpoint, network, and the cloud using our SOC As A Service.

### **Messaging Security , Dark web solutions**

Adapt the right technology solutions to protect your organization's reputation in email fraud attacks by authenticating all your senders, without blocking legitimate emails. Analyze email with multi-layered content analysis, reputation analysis, and sandboxing within a single email security solution.

### **PAM, MFA & ZTNA Solutions**

Prevent unauthorized access to applications and network resources. Monitor and log the activity. Enable Multi-Factor-Authentication to validate the access in realtime. ZTNA provides secure remote access to an organization's applications, data, and services based on clearly defined access control policies.

# IT Infrastructure Solutions

Build a Strong Infrastructure Backbone to Power

## **Switching , Routing and Network Security Solutions**

Delivering high quality , reliable , secured and scalable solutions for all size companies from medium to large enterprise. Specialized in all network topology implementations.

## **Compute, Storage and Virtualization Solutions**

Consulting , design, implementation and support for compute, storage and virtualization solutions. Expertise in designing mission critical infrastructure for process and compute intensive operations.

## **Campus Wifi , IP Telephony Solutions**

Expertise in large campus network, Wi-Fi and IPT design and implementations. Core , distribution and access design with high availability and redundancy across. Design and implementation of missing critical network infrastructure solutions.

## **Structured Cabling , CCTV , AV Solutions**

Structured cabling, Data Center Cabling, optic fiber splicing and warehouse cabling solutions. CCTV surveillance asper SIRA regulatory requirements. Expertise in control rooms design, smart meeting rooms, videowalls, and digital signage.

## **Backup & Data Protection Solutions**

Protect VMs, Servers, SaaS, Apps, DBs, Cloud Workloads & Endpoints with enterprise backup solutions. Designing and Implementing best backup solution and strategies along with setting up retention policies and trail restore.

## Managed IT Infrastructure Service

Our Managed Infrastructure Services gives you comprehensive management and monitoring of your on-premises, cloud IT infrastructure to enhance operational agility, reduce risk and optimize cloud and technology infrastructure investments.

## SOC as a Service

Comprehensive Real estate Eco-System which helps you to stay ahead in the market. A highly customizable feature-packed platform that builds powerful real estate websites for all business sizes.

## Managed Cloud Service

With our Managed Service you achieve continuous and autonomous cloud governance, and continuous cloud compliance, run highly available and lean operations, early identify and mitigate security threats and optimize cloud costs.

## Managed Email Security

Email threats evolve every day. Our team ensures that your defensive systems stay ahead of attackers. With our Managed Email Security services, you get regular health checks and gain peace of mind knowing that you're protected with the latest updates.

## Managed Services Network & Security

Reduce downtime and ensure maximum uptime with our Managed Network & Security service. We provide support in configuration management, security policy creation and rollout etc. Our online to onsite support can help you reduce the outages.

# Application Development

Accelerate Innovation and Manage Risk  
with DevOps

## AI-Powered, Intelligent Delivery Pipeline

Intelligent Automation to improve overall visibility, velocity, and quality

## Modern Testing with Shift Left / Shift Right Practices

Embed quality From requirements through production to eliminate existing QA roadblocks

## Data-Driven, Predictive Insights, Risk Remediation

Continuous Improvement through ML for business processes and site reliability

## Dev/Test Environment Simplification

Remove constraints with virtual services; synthetic and masked test data provisioning

## Pipeline Automation

Automate app and environment setup & deployment, visibility, tracking at scale

Industry  
**Expertise**



Healthcare



Financial



Government



Education



Manufacturing



Retail

Clients

# Happy with us

Our  
**Technology Partners**



# We Are By Timelines

## A brief history of Emtech



**1993**

Emtech established with a vision to become the leading technology solutions and service provider in the region



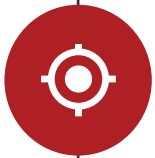
**1995**

Emtech Technical Learning center was formed to provide CISCO CCIE training & Microsoft Certifications



**2005**

Expanded Emtech's branch at Abu Dhabi capital of UAE to provide seamless support to our Abu Dhabi and Al Ain customers



**2008**

Established branch office at Sharjah to provide extended support to our customers in Northern Emirates of UAE



**2018**

Emtech launched its digital transformation Entity 'emsoho' with a vision to empower & accelerate business through technologies



**2019**

Emtech and Microsoft joined hands together to expand Azure cloud solutions portfolio in the region



**2020**

Emtech Technical Learning Center merged with 'WEBA Digital Learning Solutions' with a vision to provide most innovative learning technology solutions



**Present**

Emsoho merges with ISPG International to take Emtech's Digital Transformation vision global



# Meet The Team

Expertise You Can Trust



Why  
**Emtech**

**30 Years**

Service Excellence

**4000+**

Happy Customers

**700+**

Projects Delivered

**Center of  
Excellence**

Emtech | ISPG | Weba

**Certified**

Engineers

**Expert**

Consultancy

**ISO**

Certified

**TRA**

Certified

**SIRA**

Certified

**MCC**

Certified

Our  
**Office**

**Emtech Computer  
Co LLC**

Abu Dhabi

**ISPG Technologies  
International**

U.A.E | India | K.S.A | U.K | U.S.A.

**HEAD OFFICE**

Emtech Computer Co LLC

Dubai

**Al Zahi  
Computer Co LLC**

Sharjah

**WEBA  
Technologies**

India | U.A.E

✉ [info@emtech.ae](mailto:info@emtech.ae) ☎ 04-3966233 🌐 [www.emtech.ae](http://www.emtech.ae) 📍 P.B.NO 28023



**your technology  
innovation partner**

**emtech**

[www.emtech.ae](http://www.emtech.ae)